

Juris DOC Suite Network Guide

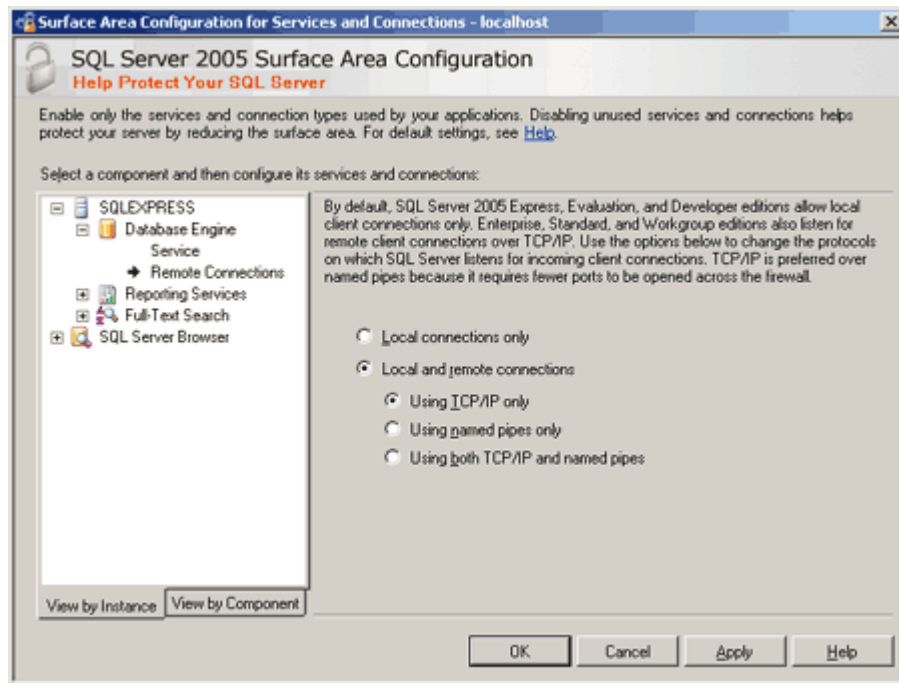
Juris DOC Suite allows for the application to work across a network. This means that you have the ability to point all of the Juris DOC Suite applications to the same database. This allows everyone to share data. By **default** Juris DOC Suite is setup to run **Locally**, which means that anyone running Juris DOC Suite will **not** see other peoples data (Cases, etc.). If you would like to have Juris DOC Suite run across a network then please follow the steps below.

Step 1: Determine which computer you would like to act as the “**Server**”. This means everyone else running Juris DOC Suite will connect to this machine to access the common data (the database). It also means that this computer **MUST** always be on & connected to the network. If the Server is **NOT** on the network then the other users, of Juris DOC Suite, will not be able to run the application correctly.

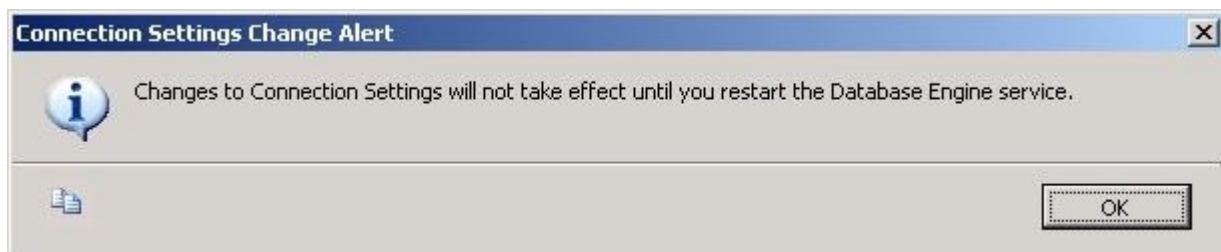
Step 2: On the computer that you have choosen as the **Server**. Click on your “**Start**” button. In your Program’s Menu, select **Microsoft SQL Server 2005 > Configuration Tools > SQL Server Surface Area Configuration**. You will see the following screen appear:



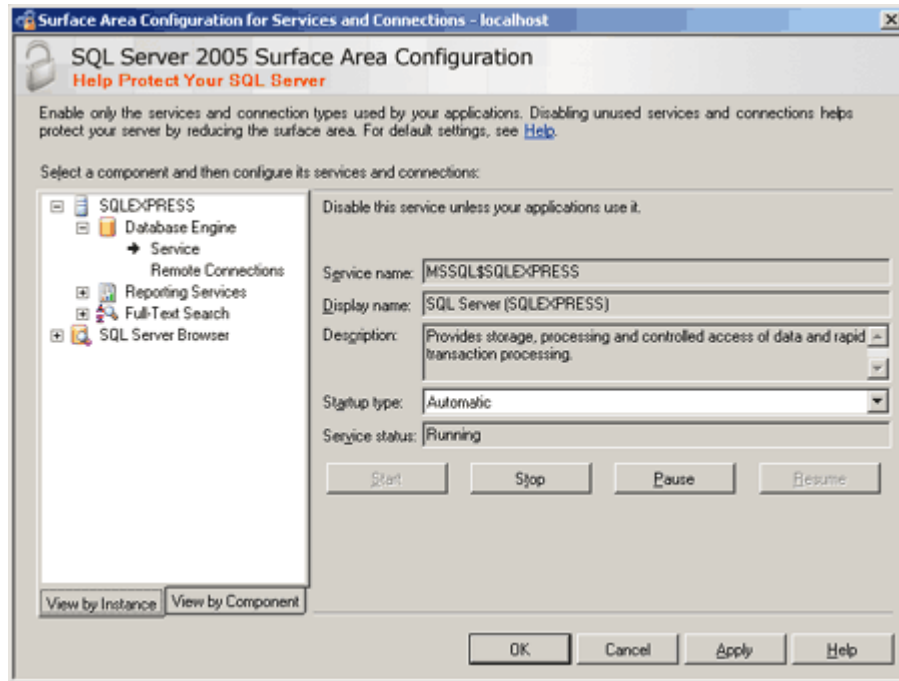
Step 3: You can see two blue colored links below in the screen that appeared above. **Choose Surface Area Configuration for Services And Connections.** You will see the following screen appear:



Step 4: In the above picture, you can see the **Database Engine** link on the left-hand side. Expand it, select **Local and remote Connections Option**. And choose the option **Local and remote connections**. Then choose the sub option **Using TCP/IP only**. Click the Apply button. This will respond by giving you an alert message shown below. Click **OK**.



Step 5: Next click on the **Service** link on the left-hand side menu. It will show you the window given below. For the changes to take effect, you have to restart the SQL Server Services. Click on the **Stop** button and then Click on the **Start** button. **Wait till the service starts successfully.**

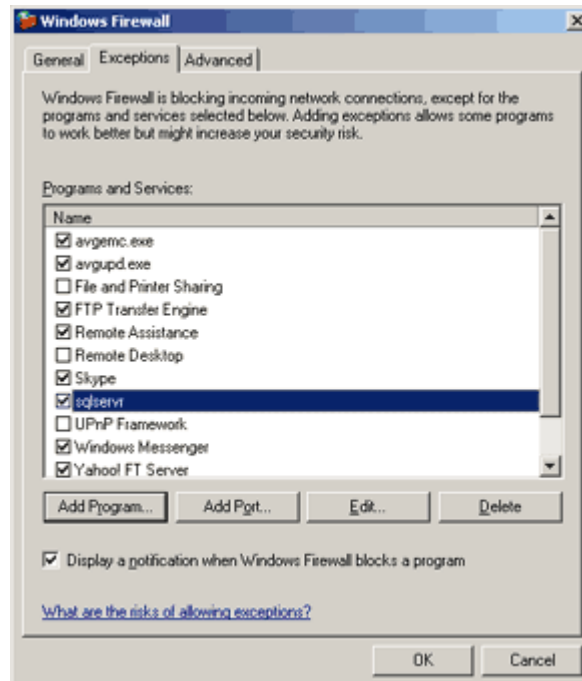


If you have a firewall (the default Windows Firewall or another Firewall program) then please follow the steps below. If you do NOT have a firewall then you are done & you should be able to move on to Step 7.

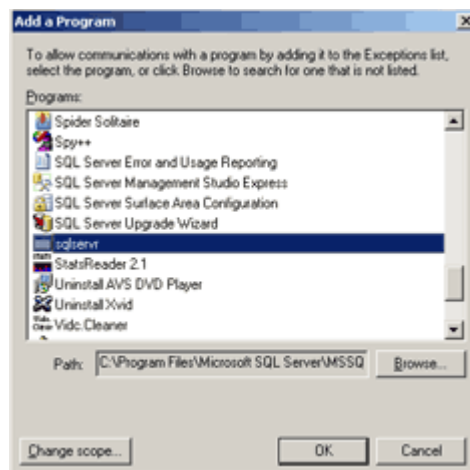
Step 6: Next, we need to open up the firewall, to allow others to connect to the database. We need to allow Sql Sever to be an exception in our firewall.

NOTE: This is following the standard Windows Firewall. It might be a little different depending on the type of firewall that you are running. Please check your firewall documentation if you are using something else.

Step 7: Open the **Control Panel**, click on **Windows Firewall**. Go to the **Exceptions Tab**. Just scroll down and check whether you can see **sqlservr.exe** is added in the list and also its checkbox is checked.



Step 8: If you do NOT see the “sqlservr” in the list, click **Add Programs** button, then click the **Browse** button and locate the **sqlservr.exe** inside the **Program Files > Microsoft SQL Server > MSSQL.1 > MSSQL > BINN > sqlservr.exe**. The path might be different depends on the SQL Server 2005 installation. So find the sqlservr.exe and add it in the exceptions list. Then Click **OK**.



Perform Steps 9 & 10 for each computer that is running Juris DOC Suite.

Step 9: Open up **Juris DOC Suite**. Click on **File > Choose Source of Data**. You will see the following screen:



Step 10: Follow the directions of the wizard & when you are done click **Finish**. The application will then attempt to connect to the database that you specified (either Local or Network). If any problems occur while trying to connect then an Error Message Box should appear.