

Juris DOC Suite Installation Guide

When you place the CD into your computer it should start automatically.

Next, you might see a message, from Windows Vista, on whether you want to “Allow” the program to execute. Please click on “Allow”.

The JurisDoc Suite installer will also check for certain requirements, on your computer. The requirements for JurisDoc Suite are:

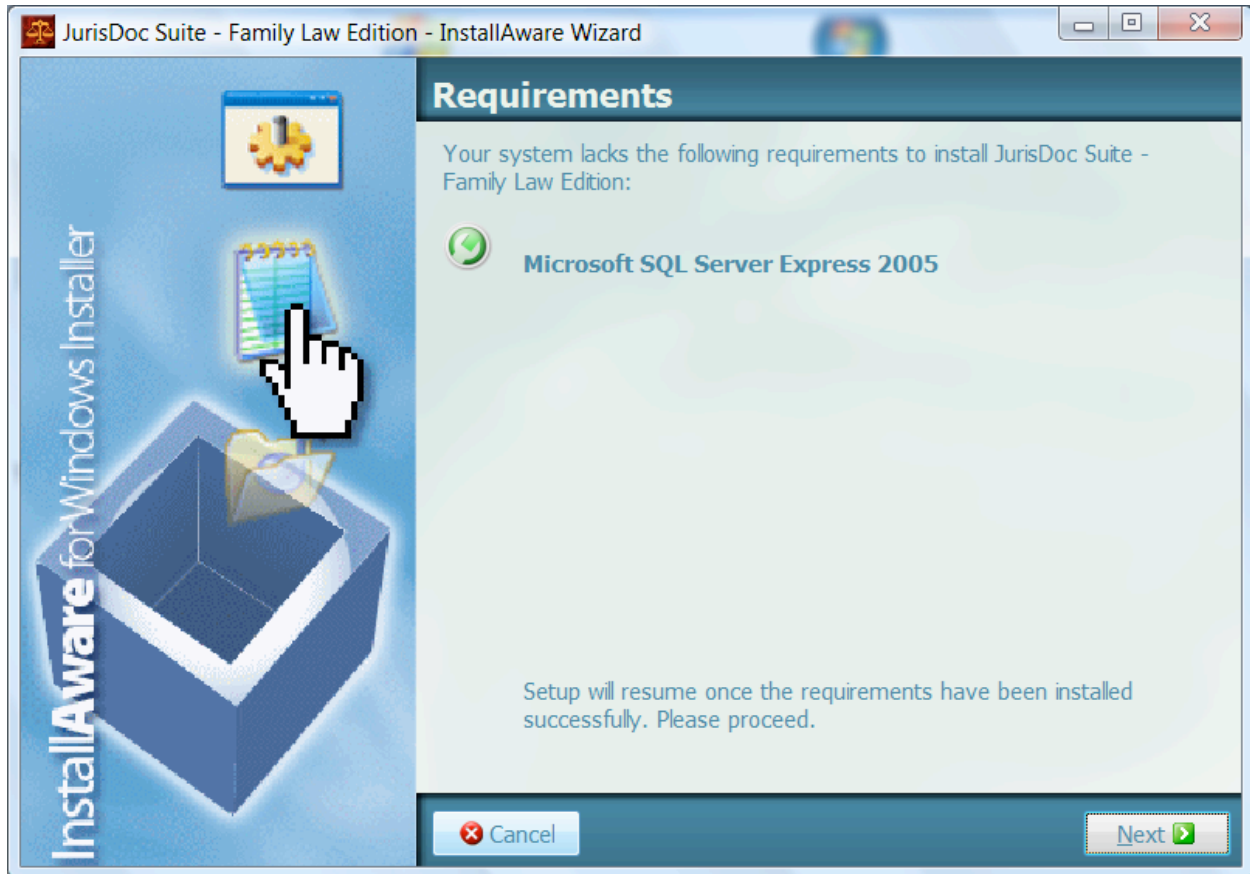
- Microsoft .NET Framework 2.0

- Microsoft MDAC 2.8 (or greater)

- Microsoft SQL Server Express 2005 with Service Pack 2

- Microsoft Windows Installer 3.0 (or greater)

If you are missing any of the pre-requisites then you will see a screen that will let you know which ones are missing (see Figure 1). The JurisDoc Suite installer will then install the missing requirements.



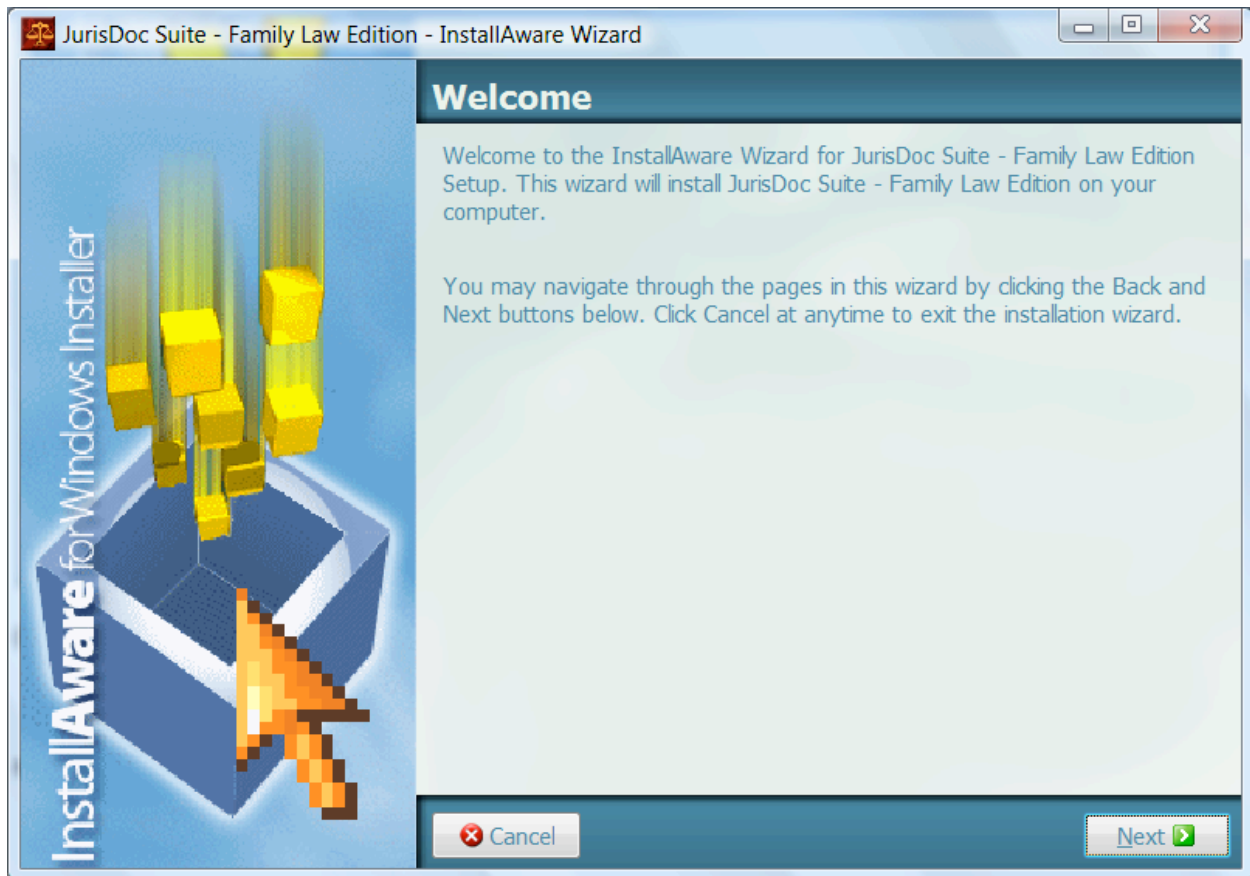
(Figure 1) – In this example, the computer was missing the requirement of ‘Microsoft SQL Server Express 2005’

Clicking on the “Next” button will begin the installation of the required applications. (see Figure 2)



(Figure 2)

After the installation has finished installing the required applications you will see the following screen (see Figure 3):



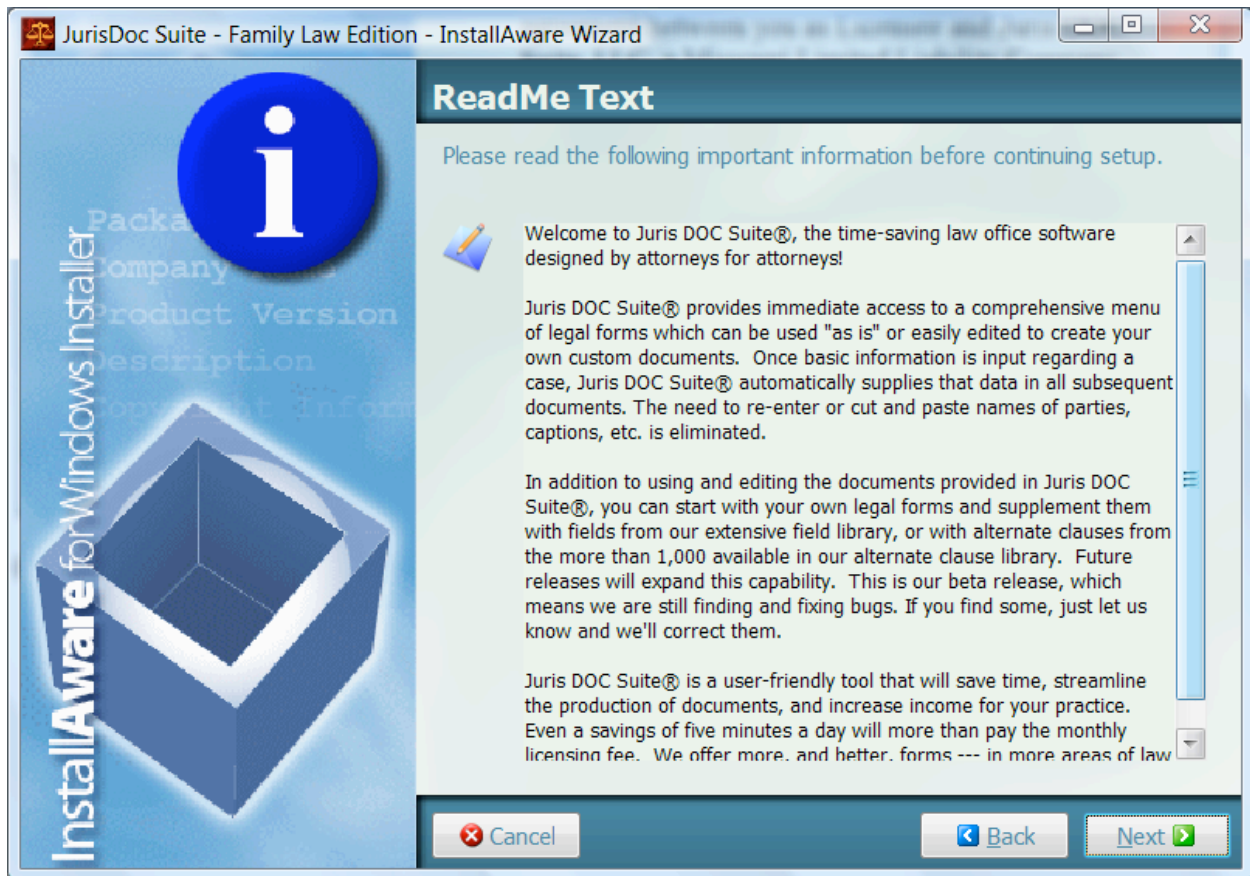
(Figure 3)

After clicking on the "Next" button you will see the License Agreement screen (see Figure 4). You MUST click on the "I have read, understand, and accept the license agreement" checkbox before you can click on the "Next" button.



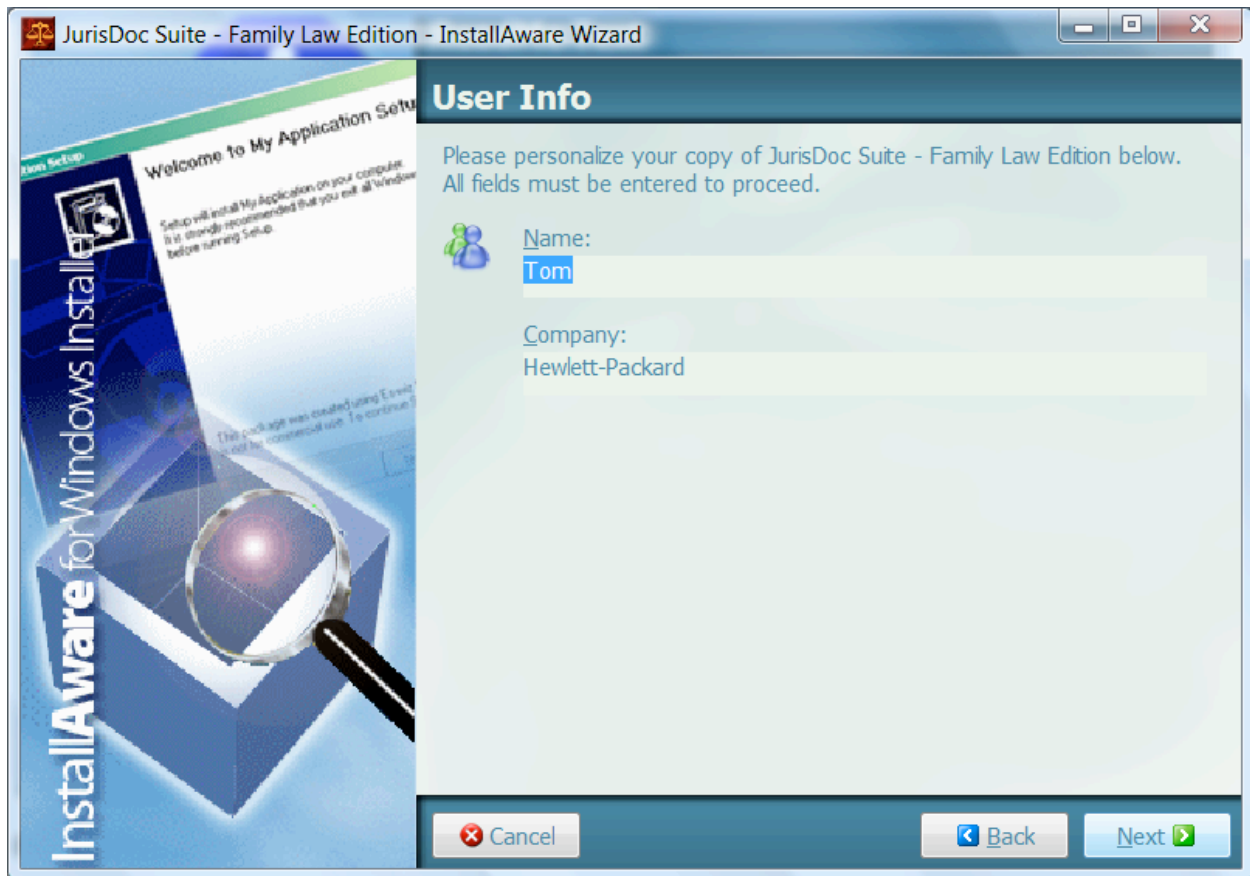
(Figure 4)

Then you will see a general ReadMe screen (see Figure 5). Click "Next" when you are finished reading.



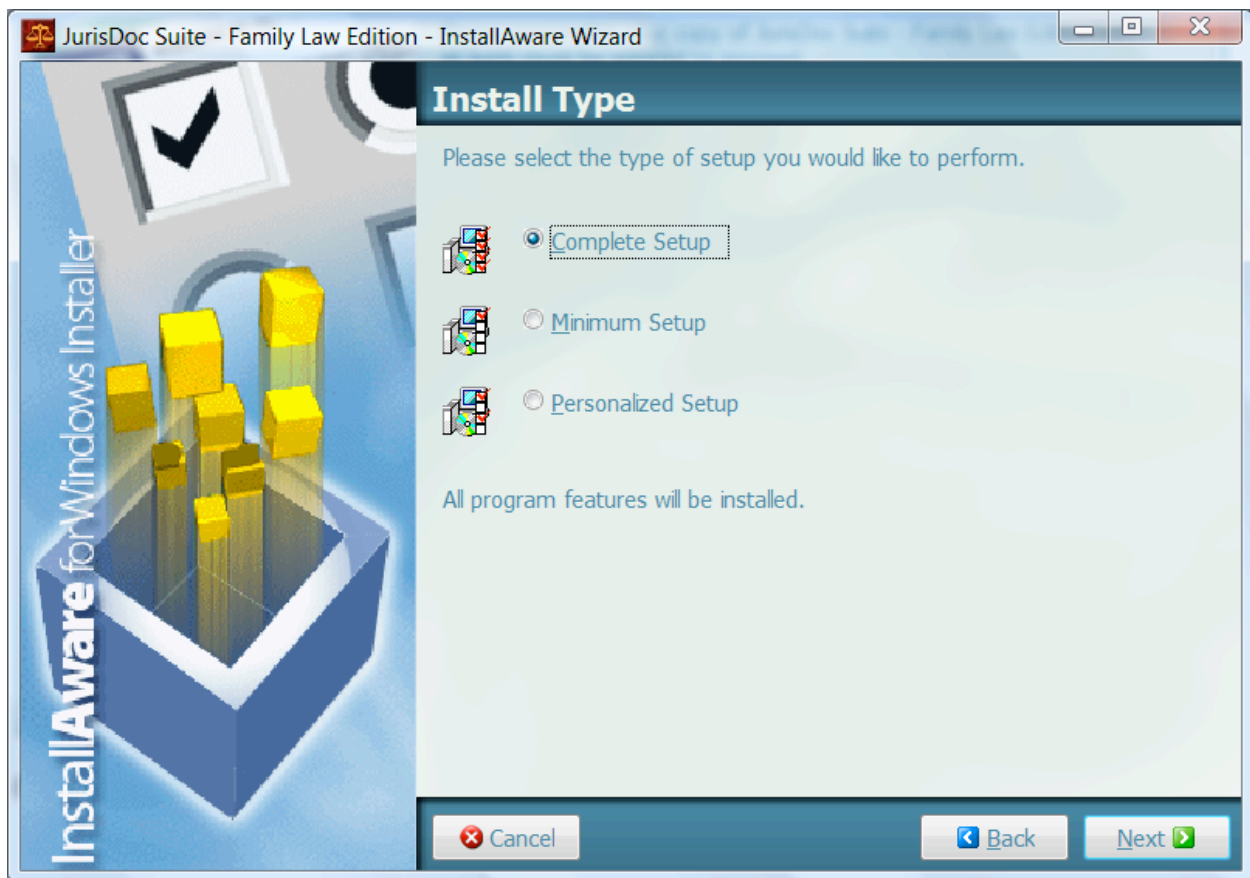
(Figure 5)

Then you will see the User Info screen (see Figure 6). Click "Next" after you have filling out all of the information.



(Figure 6)

Then you will see the Install Type screen (see Figure 7). Choose whichever installation type you would like and click "Next".



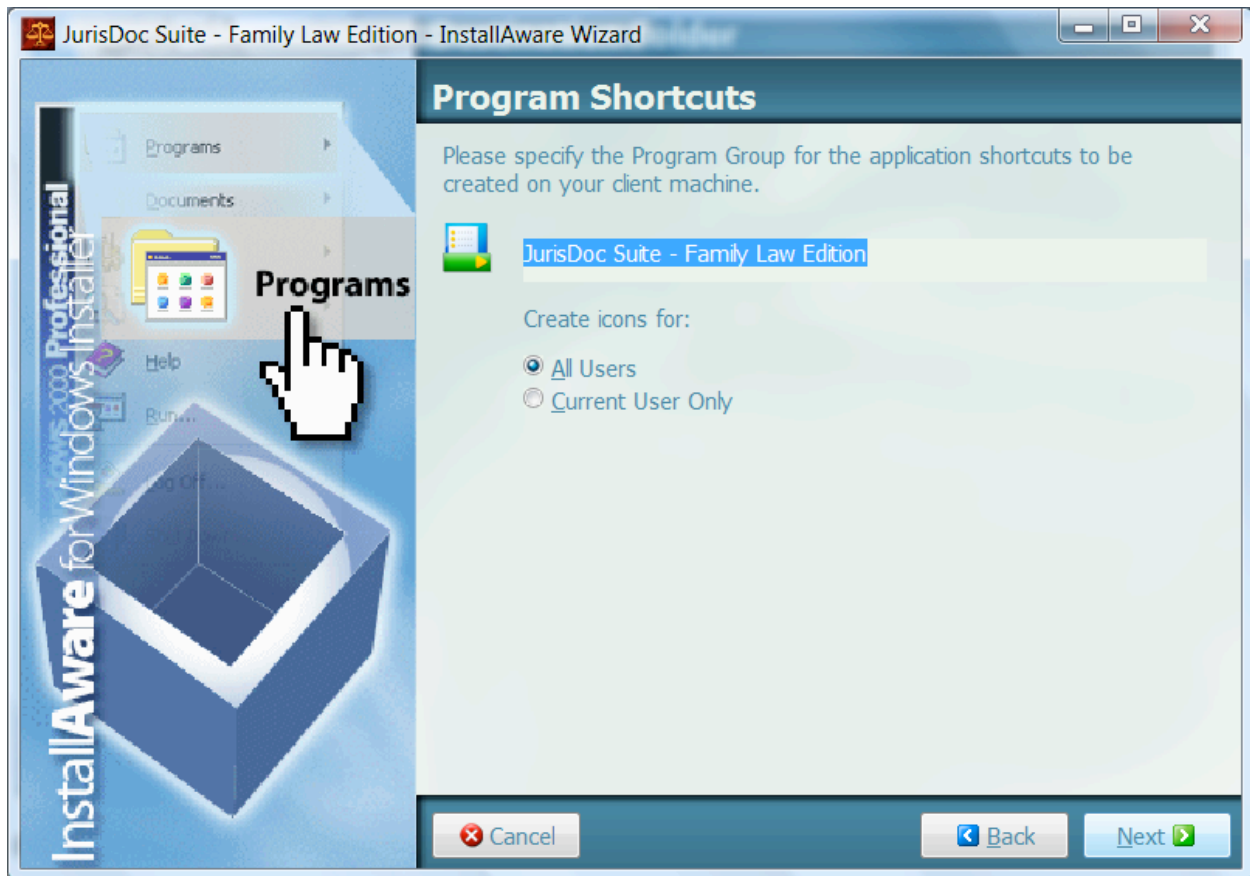
(Figure 7)

Then you will see the Destination Folder screen (see Figure 8). You may choose where you would like the application to be installed. Choose the destination location and click "Next".



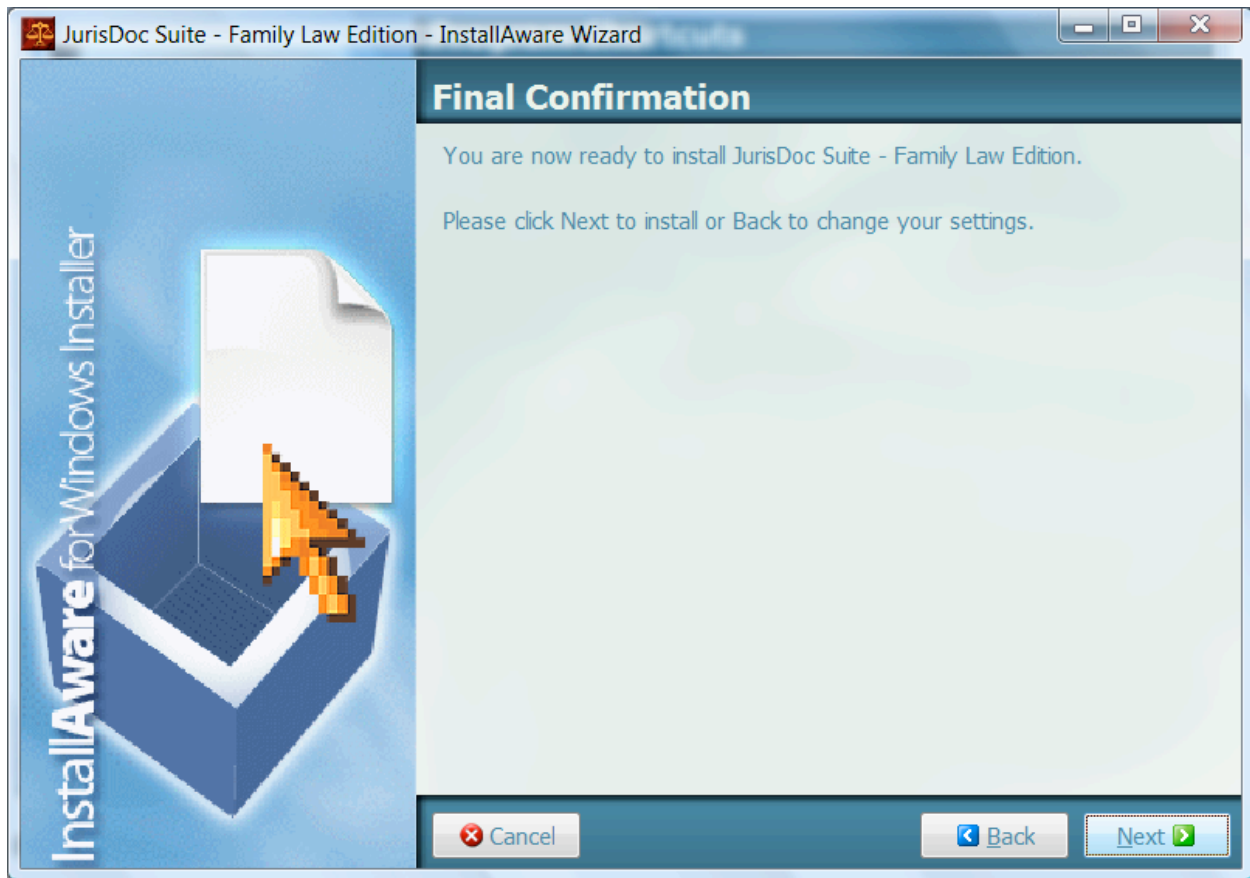
(Figure 8)

Then you will see the Program Shortcuts screen (see Figure 9). Please click "Next".



(Figure 9)

Then you will see the Final Confirmation screen (see Figure 10). Click “Next” when you want to start the installation of JurisDoc Suite.



(Figure 10)